

[PROJECT]

# AN EVEN MORE SINISTER PLAN

[INSTRUCTOR]

*Rob Kovitz*

[INFORMATION]

[POSITION]

*Sessional Instructor*

[PROGRAM]

*Environmental Design*

[DESCRIPTION]

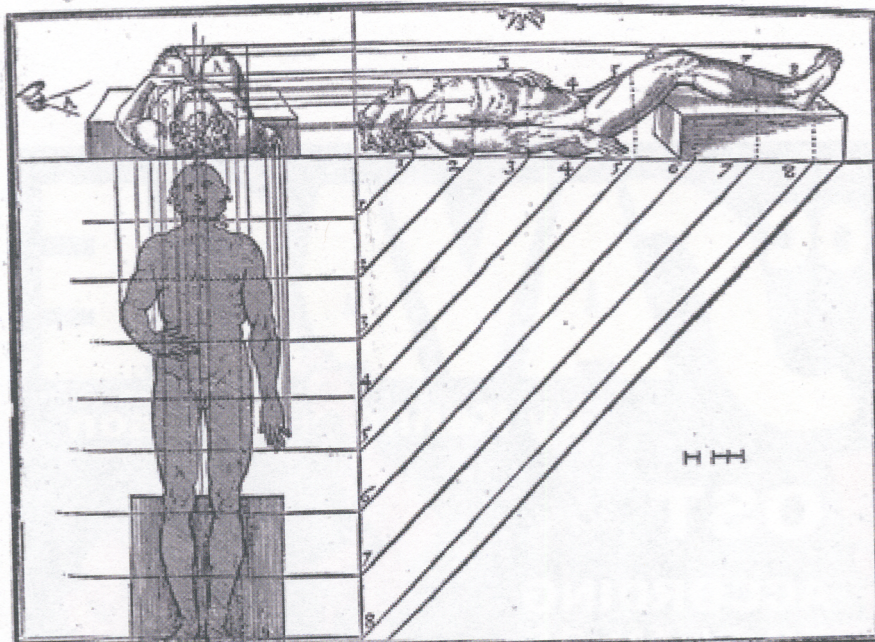
This piece is a short chapter from Rob Kovitz's current bookwork-in-progress titled *According to Plan*.

## *Back Cover Blurb:*

"In the development of these inquiries into the subject of Architectural Composition, the greatest amount of space has been given to the study of the plan. This method has been employed because it is believed to be in accord with the opinion of the foremost teachers of Architecture who place the study of the plan at the head of instruction both in theory and practice. In respect to this point of view the reader will note that my study of the subject has led me to a position considerably different from that which has been generally followed by other English and American writers who, while they have not neglected the plan, have at least relegated it to a comparatively subordinate position."

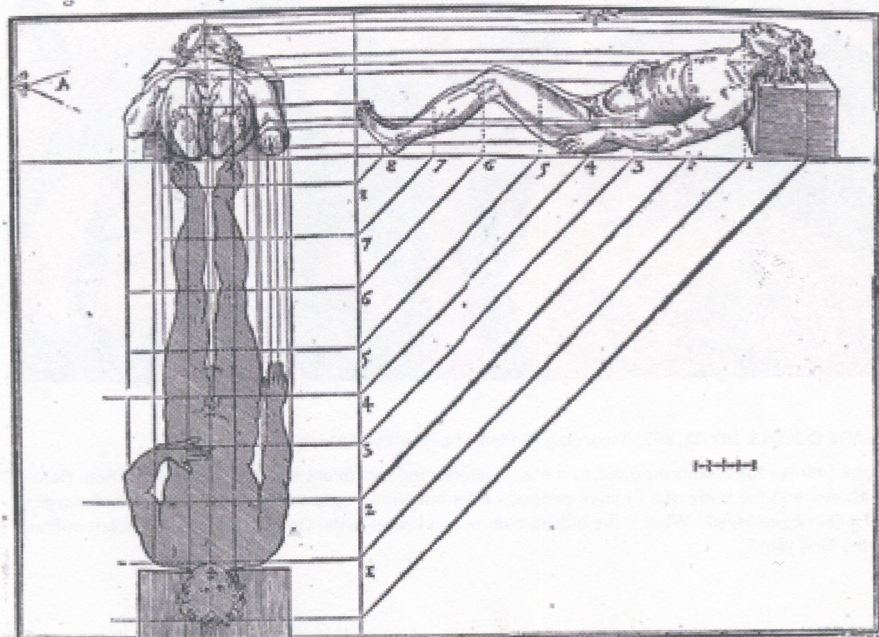
Nathaniel Curtis, *Architectural Composition*  
(Cleveland: J.H. Jansen, 1923)



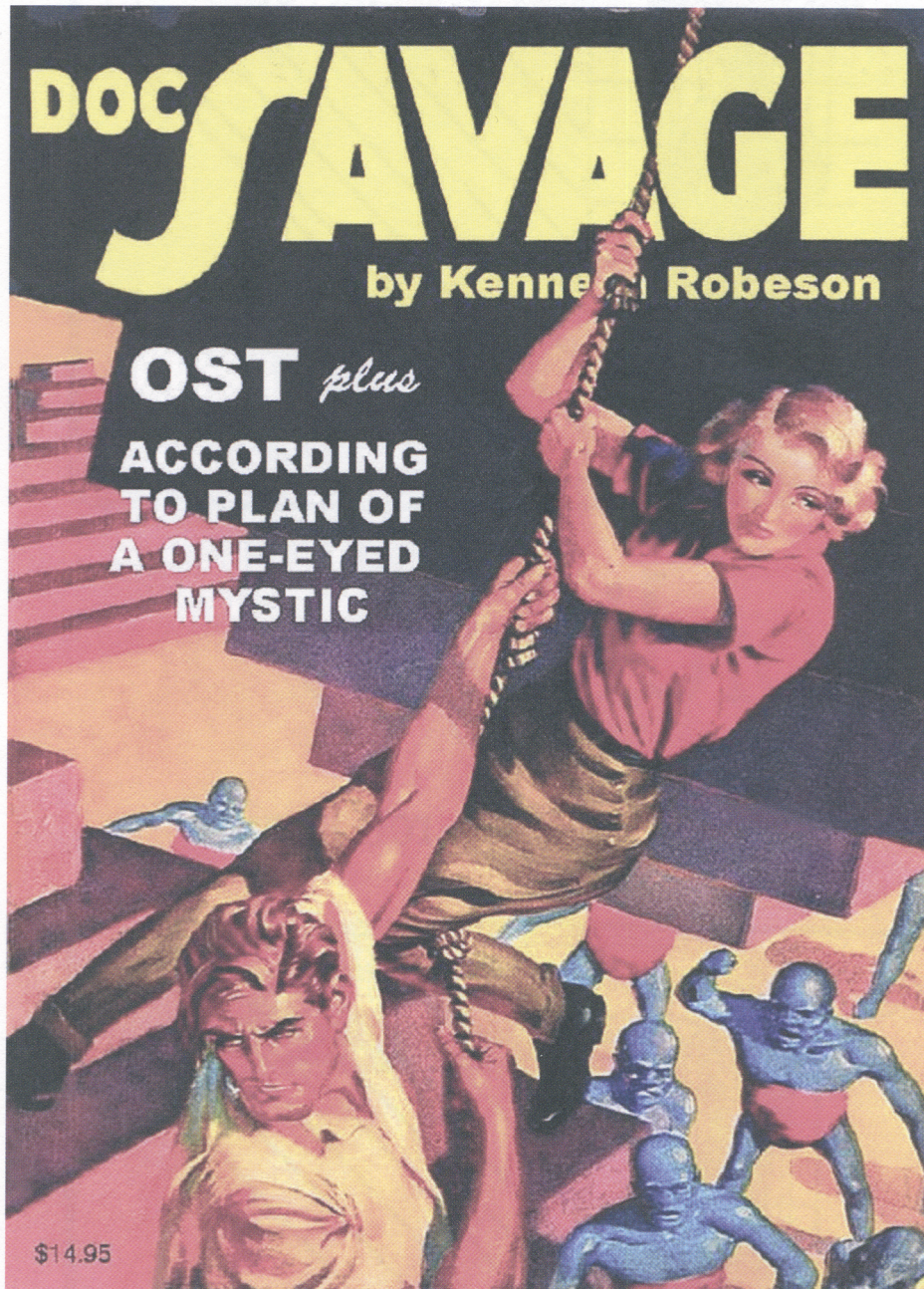


# according to plan

rob kovitz







DOC SAVAGE DOUBLE NOVEL #53: According to Plan of a One-Eyed Mystic

Doc Savage follows his stolen dirigible to a magic island and discovers the lost city of Ost. Then, Renny Renwick awakens in the body of a fugitive gangster after encountering a strange impish man in *According to Plan of a One-Eyed Mystic*. What is the bizarre connection between the One-Eyed Mystic, a stolen military secret and a Nazi plot?



## an even more sinister **plan**

### *Agents Secrets*

Moles threaten to foil a team of secret agents' **plan**.

### *The Octagon*

A martial artist must defeat a **plan** by ninjas to create a worldwide training camp for terrorists.

### *Headhunter The Assessment Weekend*

A motley group of business students in Berlin, Germany sign up for Takahashi Corp.'s assessment weekend, hoping to land one of the coveted spots with the consulting company. Under the watchful eye of a company psychologist, the team-working and improvisational skills of the aspirants will be put to the test in a survival-type situation. But nothing goes according to **plan** ...

### *Wrong Turn 2: Dead End*

A group of reality show contestants find themselves fighting for their survival against a family of hideously deformed inbred cannibals who **plan** to ruthlessly butcher them all.

### *KISS Meets the Phantom of the Park*

The tale of rock band KISS and their efforts to thwart a diabolical **plan** by mad scientist Abner Devereaux ...

### *Carnosaur*

A brilliant geneticist, Diane Ladd, **plans** to expose a lethal virus to every human being on the planet. Her objective— to destroy humankind in favour of her new strain of prehistoric dinosaurs. Two people stand in the way of her diabolical **plan**, a cynical night watchman and a lovely idealistic environmentalist. The two must overcome their differences long enough to uncover the scientist's scheme and fight her carnivorous creations in a desperate battle against the extinction of the human race.

### *The Return of the Vampire*

In 1918, an English family are terrorized by a vampire, until they learn how to deal with it. They think their troubles are over, but German bombs in WWII



*according to plan*

free the monster. He reclaims the soul of his wolfman ex-servant, and assuming the identity of a scientist who has just escaped from a concentration camp, he starts out on a **plan** to get revenge upon the family.

*Yo-Yo Girl Cop*

... but finds an even more sinister **plan** is about to unfold.

*Senrei*

A fatal skin disease forces a beautiful actress to retire from the screen. She puts a sinister **plan** into motion to transplant her brain into her own daughter Sakura ...

*Female Prisoner #701: Scorpion*

After being cruelly set up and deceived by Sugimi (Natsuyagi Isao), a conniving and crooked detective she had whole-heartedly fallen in love with (and subsequently lost her virginity to ...), Matsushima Nami's desire for revenge knows no bounds. Her failed attempt at stabbing Sugimi on the steps of the Tokyo Metropolitan Police Headquarters results in her doing hard time in a female prison run by sadistic and horny male guards. To Sugimi's surprise, Matsushima refuses to testify against him and his connections to the mob, and now the sheer fact that she knows such secrets makes her a liability. So Sugimi and the Japanese mafia orchestrate a **plan** whereby Matsushima will succumb to an "accidental" death in prison. They enlist the help of Kagiri, another female inmate with ties to both Sugimi and the mafia, thus their formidable **plan** is quickly set in motion. Little do they realize, however, how hotly Matsushima's desire for revenge burns within her.

*Dead or Alive Hanzaisha*

As they **plan** an all-out-assault on the remaining Chinese and Japanese mafia kings, only Detective Jojima (Aikawa Sho) stands between them and complete domination.

*Curral de Mulheres*

Young women in the Amazon are kidnapped by a ring of devil-worshippers, who **plan** to sell them as sex slaves ...

*Queen of Outer Space*

Three American astronauts are on the first manned mission to Venus, and when they arrive, they find the planet to be inhabited solely by women with high heels and short dresses. Unfortunately, they are immediately imprisoned,



for the queen who rules Venus hates men. Suspecting the astronauts to be spies, she now **plans** to destroy the Earth. So now it's up to the three men (and some friendly Venusians) to overthrow the wicked queen and save the Earth.

*Design for Scandal*

To save his job, newsman Jeff Sherman offers to help his boss get out of a swingeing alimony settlement. But his devious **plan** to compromise Cornelia Porter, the judge on the case, while she is on holiday at Cape Cod soon proves to be— well—too devious!

*The Silencers*

In this, the first Matt Helm movie, we see Matt Helm coaxed out of semi-retirement by an attractive ex-partner. It seems that the evil Big O organization has a nefarious **plan** called “Operation—Fallout.” If this **plan** comes to fruition, Big O will explode an atomic bomb over Alamagordo, NM, and start WWII. Only Matt Helm can stop them.

*The Light at the Edge of the World*

Pirates take over a lighthouse on a rocky island. They then execute a devious **plan** to cause ships to run aground ...

*Indiana Jones and the Temple of Doom*

After arriving in India, Indiana Jones is asked by a desperate village to find a mystical stone. He agrees, and stumbles upon a secret cult plotting a terrible **plan** in the catacombs of an ancient palace.

*Tick Tock*

Rachel **plans** with her partner-in-crime Carla to murder Rachel's wealthy husband for his money through a complex plot of blackmail, seduction, and brutality involving a cowboy named Travis who may or may not be on to the ladies **plan**.

*Raqeeb*

A diabolical **plan** is hatched between Sunny and Sophie to kill Remo by natural means, by just threatening him by fake bullets, so that he dies in an asthmatic attack, so that no suspicion is raised. And Remo is killed by Sunny, not by asthma, but by the gun. The bullets were real, indeed. Are there any other meanings behind the scenes more dark than this?